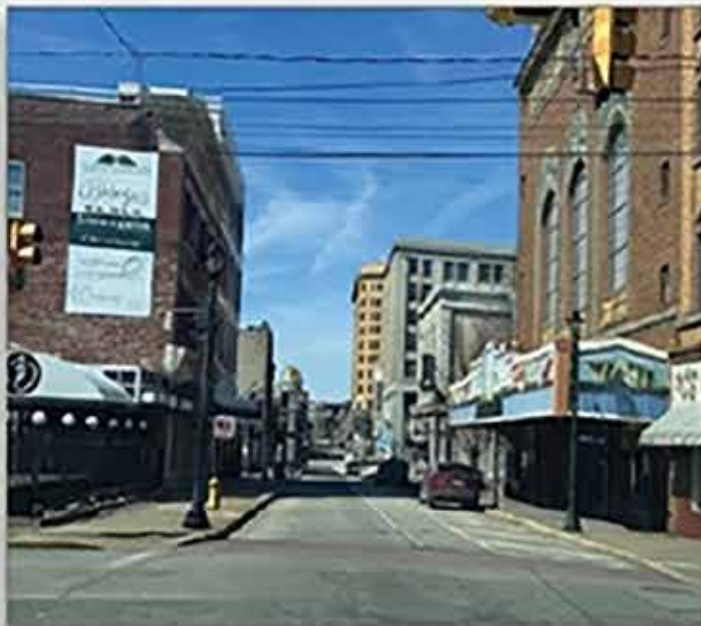


# 2025 ANNUAL REPORT

Empowering Economic Growth and  
Enhancing Community in Fayette County, PA



*Building a Path to Progress, Together.*

## Table of Contents

Pg. 1	Chair's Message
Pg. 2	About Us
Pg. 3	Performance Measures
Pg. 4-5	Real Estate Activity
Pg. 6-7	Business Support
Pgs. 8-10	Planning, Initiatives & Collaborations
Pg. 11	Staff News
Pg. 12	Financial Statement
Pg. 13	Board of Directors
Pg. 14	Members

**COVER PHOTOS:**

*Top left: Lemont Rail Park*

*Top right: Mt. Moriah, Uniontown Campus*

*Bottom left: Downtown Uniontown*

*Bottom right: Youghiogheny River at Ohiopyle State Park*

## CHAIR'S MESSAGE

---



DAN GEARING  
CHAIR

It is an honor to address you with 2025 being my last year serving as Chair for Fay-Penn Economic Development Council. Having served on the Board of Directors for many years, I have seen firsthand how this organization has grown and the lasting impact it continues to have on our community.

Fay-Penn has long been a catalyst for opportunity—supporting businesses, strengthening communities, and advancing economic development throughout Fayette County. That success is driven not only by strong partnerships and thoughtful investment, but by an exceptional staff whose knowledge, professionalism, and dedication are evident in everything they do.

I would like to personally thank Tim Flecker for stepping up as Executive Director during a time that a leadership change was necessary. His mentorship during the past year has been nothing short of outstanding. Our team brings passion to their work every day, and their commitment to helping businesses and communities succeed is one of Fay-Penn's greatest strengths.

The past year saw one of our long-time staff members, Tina Wargo, retire after dedicating more than 45 years to Fay-Penn. She worked for the Fayette County Development Council before it was absorbed under the Fay-Penn name in 1991. We were also happy to announce the addition of four new staff members – Executive Director Jerrod Murtha, Director of Grants Crystal Simmons, Lending Specialist Bryce Landman and Accounts Receivable Specialist Regina Harris.

Over the past year, we continued to deliver core business support services and strategically expand our real estate assets, while also engaging in key collaborative initiatives aimed at addressing broader economic development challenges facing our region. These efforts reflect the talent and adaptability of our staff, who consistently go above and beyond to develop solutions that create lasting, positive impact.

In 2026, under new Chair Todd Casteel, we continue to leverage our collective expertise, pursue new opportunities, and navigate emerging challenges with transparency, accountability, and purpose. With a strong board, engaged partners, and a passionate, capable staff, Fay-Penn is well positioned to build on its momentum and continue delivering results for our communities.

I extend my sincere thanks to our Board of Directors, members, partners, and staff. Your hard work, passion, and commitment make our mission possible. Together, we have made meaningful progress—and together, we will continue building a stronger future for our community.

---

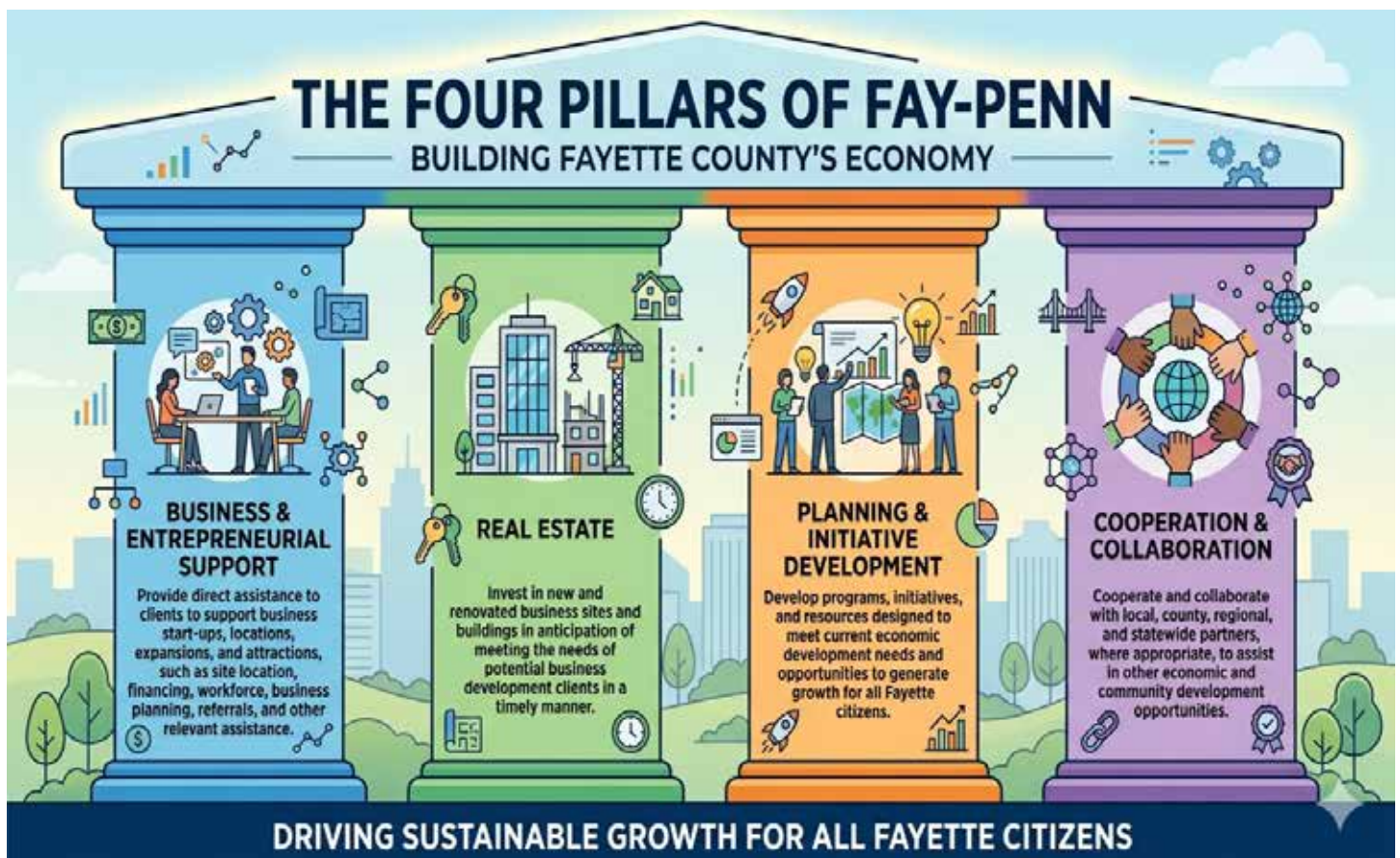
# MISSION

Fay-Penn's mission is to "stimulate all phases of economic development in Fayette County; promote industrial development and tourism and recreation; encourage the improvement of community facilities and services, education and cultural facilities, health services, and housing and transportation (highways, air, rail and water); support comprehensive planning and redevelopment and preservation of the environment and natural beauty of the County; and pursue other activities which will improve the quality of life in Fayette County."



## ABOUT US ...

Incorporated in 1991, Fay-Penn is a tax-exempt, 501(c)3 nonprofit organization that serves as the Certified Economic Development Organization (CEDO) for Fayette County.



# PERFORMANCE

# HIGHLIGHTS

## 2025 HIGHLIGHTS

### REAL ESTATE ACTIVITY

**LEASES** (new & renewals)

- 34,800 sf of Building Space

**CAPITAL IMPROVEMENTS**

(including acquisitions)

- \$4.7 Million Invested

**18** PRA/PA BUSINESS  
PROJECT REQUESTS

Total Number of Requests for Info  
(RFIs) Responded To

**13** COMPLETED PROJECTS

Unique Private Company Projects Provided  
Direct Assistance

**12** BUSINESS PLANS COMPLETED

Completed by Saint Vincent Small Business  
Development Center (SBDC)  
under contract with Fay-Penn

**5** LOANS COMPLETED

Fay-Penn Completed 5 Loans totaling  
\$1,374,000

**100%**

Annual PIDA portfolio and application performance rating  
required to maintain status as a State Certified Economic  
Development Organization (CEDO)

## 1992-2025

**CUMULATIVE  
ECONOMIC IMPACT OF  
PRIVATE COMPANY  
PROJECTS**

**496** COMPLETED  
PROJECTS

Unique Private Company Projects  
(includes, but not limited to, start-ups, expansions,  
acquisitions, locations, leases, financing, etc.)

**11,888** JOBS  
CREATED & RETAINED

Based on current and three-year projections provided by  
companies. The cumulative data is not adjusted to reflect  
reductions or increases in those original estimates.

**\$1.663** BILLION IN NEW  
PRIVATE INVESTMENT

\$35.37 Million in Fay-Penn RLF Loans  
\$229 Million in Public Financing  
\$1.9 Billion in Private Investment

**\$121,450** IN SCHOLARSHIPS  
DISTRIBUTED, BENEFITING 282  
STUDENTS

Via the Orville and Ruth Eberly Workforce Fund  
originally established in 2013 and managed by the  
Community Foundation of Fayette County, PA

# REAL ESTATE DEVELOPMENT

## ***Notable Projects:***

- **BOEING - 100 Laurel View**

\$3.5 million interior fit-out upgrade completed in 2025.

In use in 2026.

Estimated 50-100 jobs at this facility.

- **ROUTE 119 & PECHIN RD. TURNING LANE project**

Completed July 2025

Total amount: \$500,776

Grant \$438,416 / Fay-Penn \$62,360

- **LEMONT RAIL PARK - PA SITES GRANT PHASE 1**

Received the grant in 2025, work to be completed in 2026.

Total amount: \$891,524

Grant \$821,524 / Fay-Penn \$70,000

- **LIGHTING UPGRADE - FAYETTE BUSINESS PARK**

Fay-Penn received a \$63,760.00 grant from the Scott Foundation



LEMONT RAIL PARK OFF OF CONNELLSVILLE STREET, UNIONTOWN.

# REAL ESTATE DEVELOPMENT



In 2025, Mr. John Berkley generously deeded two properties on Virginia Avenue in Uniontown to Fay-Penn Economic Development Council. This contribution was made with the stipulation that the buildings be repurposed to stimulate job creation, attract new investment, and provide long-term community benefits.

Fay-Penn also purchased an adjacent property in order to provide adequate parking for potential business(es).



Fay-Penn welcomed Victor's Home Improvement, a roofing company, to 500 Mt View Drive in the Fayette Business Park in Smithfield. The move to the business park added 8 positions in the 10,800 sq. ft office as well as provided a home base for dozens of field workers.

## Check out videos of some Fay-Penn's properties



Lemont Rail



Berkley Building 1,  
Virginia Ave., Uniontown



Berkley Building 2,  
Virginia Ave., Uniontown

**ADDITIONAL PROPERTIES CAN BE FOUND AT [WWW.FAYPENN.ORG](http://WWW.FAYPENN.ORG).**

# BUSINESS SUPPORT ACTIVITY

FAY-PENN PROVIDED **\$1,374,600** IN LOANS TO **5** LOCAL BUSINESSES AND ORGANIZATIONS IN 2025 FROM THE REVOLVING LOAN FUND (RLF).

**Darby's, Uniontown - Purchase of existing restaurant operation and building.**

**Lenny Pasquale Customs, LLC, Grindstone - Office buildout for car restoration business.**

**Greater Connellsville Chamber of Commerce, Connellsville - Purchase new building.**



**Mount Moriah Christian School, Uniontown - Purchase of facility to expand operations and house students in grades 9-12.**

MOUNT MORIAH CHRISTIAN SCHOOL, UNIONTOWN CAMPUS



**May's Country Store, Normalville - Addition to their building to increase the size of their commercial kitchen.**

*Through its loan fund, Fay-Penn continues to offer flexible financing solutions that help businesses expand, transition ownership, invest in facilities, and stabilize operations—particularly when traditional financing options alone may not meet project needs.*

*Businesses and organizations interested in learning more about Fay-Penn's loan programs and business support services are encouraged to visit [www.faypenn.org](http://www.faypenn.org).*

## FAYETTE LAUNCHBOX:



The Launchbox, a collaboration between Fay-Penn and Penn State Fayette, is an innovative

workspace that allows fledgling businesses to have a space of their own while building their businesses. In 2025, the Launchbox had three tenants: Faywest IT, Legacy of Hope Center, and Sickles Bookkeeping. The Launchbox also hosted many events, including seminars, workshops, and trainings. We also welcome Emily Bagwell as the Launchbox Coordinator, a position that is a liaison between Penn State and Fay-Penn.

## ST. VINCENT SMALL BUSINESS DEVELOPMENT CENTER:

Fay-Penn continues its ongoing collaboration



with the St. Vincent Small Business Development Center to assist businesses with the development of business plans, financial projections and consulting.

# BUSINESS SUPPORT ACTIVITY



## First National Bank BUSINESS EVENT CENTER

Located within the Eberly Business Center at the University Business Park, the FNB Business Event Center remains a premier resource for the Fayette County business community.

This 70-seat facility is available during standard business hours at no cost for professional engagements, including meetings, webinars, and workshops.

To inquire about availability or reserve the space, please contact Traci at [tracif@faypenn.org](mailto:tracif@faypenn.org).



### **ACRE:**

ACRE (Alliance for Creative Rural Economies) was an amazing program that partnered Fay-Penn with Bridgeway Capital.

A cohort of 11 local artists were able to collaborate at monthly meetings, have 1:1 coaching with Fay-Penn Staff, and learn virtually on topics such as Pricing, Tax and Financing, Legal Considerations, and Marketing to name a few. Participants were also given the chance to have exhibits in a variety of shows and galleries across PA and to have a complimentary photo session to build a portfolio of their art.

This immersive program was very impactful for the cohort, with several of them continuing their coaching sessions with Fay-Penn even after the program's end.

### **EBERLY BUSINESS CENTER CO-WORKING SPACE:**

Fay-Penn's coworking space has been popular, with all available space in the building at 1040 Eberly Way occupied by tenants.

We continue to house GeoShops/com, LLC., HRG, The Fayette Board of Realtors, Express Employment, and Gladstone Wealth Partners. We welcomed the Fayette County Republic Committee and Faywest IT. Keystone Counseling and Social Services, LLC upgraded from an office to a suite on the same floor.

# PLANNING, INITIATIVES, & COLLABORATIONS

## ECONOMIC DEVELOPMENT TOWN HALLS:

In a landmark effort to streamline regional growth, the Fayette County Economic Development Coalition—comprised of the Fay-Penn Economic Development Council, the Fayette County Commissioners, the Fayette Chamber of Commerce, and the Redevelopment Authority of Fayette County—has solidified its collaborative framework.

This partnership represents a unified front for the county, allowing for the synchronization of long-term economic priorities with the specialized objectives of each participating entity. By pooling resources and expertise, the coalition has moved beyond individual project silos to foster a more resilient and attractive business environment.

Throughout 2025, the coalition prioritized transparency and public discourse through a series of Town Hall Summits. These sessions were instrumental in gathering stakeholder feedback and aligning our strategic roadmap.

Topics of the 2025 Town Halls included:

- **Data Centers**
- **Housing**
- **Tourism**



## STRATEGIC PARTNERSHIPS EXPANDING CAPACITY IN UNIONTOWN:

In late 2025, Fay-Penn Economic Development Council strengthened its collaborative role in the City of Uniontown through a set of strategic **Master Services Agreements** designed to expand economic development capacity for several key local organizations.

Fay-Penn entered into agreements with three partners:

- **Redevelopment Authority of the City of Uniontown**
- **Uniontown Downtown Business District Authority (UDBDA)**
- **City of Uniontown**

These agreements allow Fay-Penn to provide professional services—including grant development, project coordination, compliance guidance, and strategic planning—on an as-needed basis, ensuring that each organization can access experienced economic development support while maintaining responsible use of limited public resources.

[www.faypenn.org](http://www.faypenn.org)

# PLANNING, INITIATIVES, & COLLABORATIONS

## EPA BROWNFIELDS GRANT:

Fay-Penn, along with the Connellsville and Uniontown Redevelopment Authorities, was awarded **\$1.2 million** from the U.S. Environmental Protection Agency under its Brownfields program.

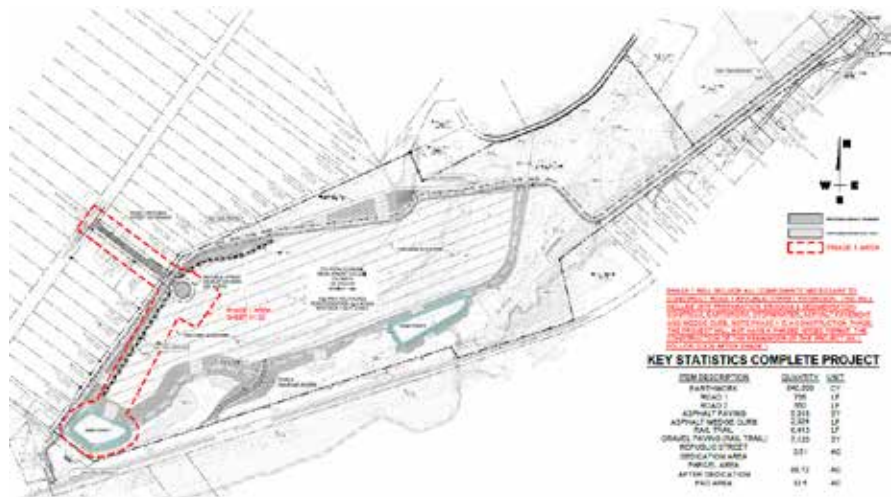
This grant funds assessments of Fayette County brownfield sites—properties potentially complicated by hazardous substances, pollutants, or contaminants. These funds enable recipients to inventory and characterize sites, conduct site assessments to determine contamination, develop cleanup and reuse plans, and conduct community involvement activities.

HAER PA-259-1

## PA SITES GRANT:

The Commonwealth of Pennsylvania selected Fay-Penn for an **\$821,524** grant through its new PA SITES (Pennsylvania Strategic Investments to Enhance Sites) program.

The grant is earmarked for Phase I development of the Lemont Rail Park site in North Union Township, specifically to build an access road and stormwater infrastructure to “pad-ready” some portion of industrial/rail-adjacent land.



Across the state in this first round, the PA SITES program awarded \$64 million to 11 projects, aiming to create shovel-ready industrial sites to attract new businesses and investments.

# PLANNING, INITIATIVES, & COLLABORATIONS

## FAYETTE COUNTY HOUSING TASK FORCE:

The Fayette County Housing Task Force serves as a vital collaborative engine, uniting local government officials, economic development professionals, engineering and construction experts, and community advocates to dismantle the systemic bottlenecks stifling local residential growth.

By pooling diverse expertise, the group systematically tackles multifaceted barriers ranging from restrictive zoning ordinances and construction costs to the complexities of infrastructure financing. Rather than working in silos, members use this unified platform to streamline the permitting process and pilot innovative land-trust models, ensuring that housing solutions are not just discussed, but will be actively integrated into the county's long-term economic strategy.

Since commissioning the county-wide housing assessment study in 2023, Fay-Penn has remained committed to the advancement of housing development in the county. To work in tandem with the county-wide Housing Task Force, Fay-Penn formed it's own housing committee, a sub-committee of the Real Estate Committee. The Housing Committee meets once a month and focuses on Fay-Penn's place in increasing housing stock. The committee has made great strides in developing funding plans, infrastructure support, and the consideration of using Fay-Penn owned land for potential development sites.

## LEADERSHIP FAYETTE:



Leadership Fayette has been an important partnership between the Fayette Chamber of Commerce and Penn State Fayette for many years, with participants learning leadership skills from speakers at many of our County's most successful businesses.

In 2025, the program was elevated with the help of Dr. Emily Dennis of CMU. Dr. Dennis has been instrumental in tying the theme of Strengths Based Leadership into each monthly session, empowering our cohort to be able to recognize their leadership qualities, building high-performing teams, and inspiring others as they continue through their careers.

Thank you to Dr. Dennis and our supporting business partners for an amazing program.



## MASTERMINDS BUSINESS WORKSHOP SERIES:

Masterminds is an educational series in partnership with the Fayette Chamber of Commerce, Fayette County, the Washington County Council on Economic Development, and new this year, the Fayette Launchbox.

Masterminds focuses on topics important to small businesses and entrepreneurs such as AI for Marketing, Succession Planning, Maintaining Good Credit, Canva, and Cybersecurity.

In 2025, we hosted over 150 learners with the program. With guest speakers and educators from across the county excited to donate their time and collaborate with fellow business owners, we have been able to hold this series with zero to minimal cost to our learners.

# 2025 STAFF NEWS



The organization announced the appointment of Jerrod Murtha as Deputy Executive Director and taking over the role of Executive Director in December. In this role, Murtha is supporting the organization’s mission of driving economic growth, supporting local businesses, and improving the quality of life across Fayette County.

Fay-Penn also announced the hiring of Crystal Simmons as its new Director of Grants. In this newly created role, Simmons oversees the development, management, and coordination of grant funding to support Fay-Penn’s mission.

The organization welcomed Bryce Landman, who has taken over the role of Lending Specialist, after completing an internship at Fay-Penn. That position oversees and manages Fay-Penn's Revolving Loan Fund. Regina Harris was also brought onto the team as an Accounts Receivable Specialist in Fay-Penn's accounting department.

Fay-Penn offered a unique internship opportunity in 2025. Our summer program offered 4 interns the opportunity to learn about grant programs, marketing, economic development, local businesses, and more.



TIMOTHY E. FLECKER  
Executive Director



JERROD MURTHA  
Deputy Executive Director



DR. GLENN A. VALDISERRI  
Chief Financial Officer



LORI SCOTT  
Director of Business Development



CRYSTAL SIMMONS  
Director of Grants



MISTY HILTABIDEL  
Workforce & Business Services Manager



BRYCE LANDMAN  
Loan Specialist



TWILA KENDALL  
Compliance & Contract Specialist



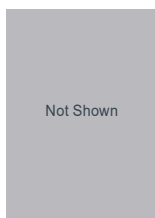
TINA WARGO ZEPP  
Senior Director of Corporate Technical Support



BRENDA SAPIC  
Senior Accountant



LINDA TASSER  
Loan Consultant



EARL MILLER  
Director of Real Estate



TRACI FENNER  
HR | Office manager



KIMBERLY WYDA  
Lease & Asset Accountant



REGINA HARRIS  
Accounts Receivable Specialist



**After more than four decades of steadfast commitment, Tina Wargo Zeppo retired from the Fay-Penn Economic Development Council in 2025, leaving behind a legacy that is woven into the very fabric of Fayette County’s growth.**

**Since the organization’s early years, Tina has been a cornerstone of its operations, most recently serving as Senior Director of Corporate Technical Support. Her career in economic development, which predates back to 1981, has spanned the evolution of the Council itself, from its foundational projects in the early 1990s to the complex, multi-million dollar investments that define the region today. She has been the quiet force ensuring that the technical and administrative engines of economic development remained synchronized, supporting the creation of thousands of jobs and the revitalization of local communities.**

**Known for her deep institutional knowledge and an unwavering dedication to the Council’s mission, she has seen Fay-Penn through decades of transformation, helping to navigate the shifts from traditional manufacturing to modern technology and infrastructure. As she steps into this well-deserved retirement, her influence remains visible in the hundreds of successful projects and business initiatives she helped shepherd.**

# FINANCIAL STATEMENT

## STATEMENT OF FINANCIAL POSITION FOR THE YEAR ENDING DECEMBER 31, 2024

### ASSETS

Cash & Cash Equivalents	\$	7,466,480
Account Receivable	\$	24,356
Certificates of Deposit	\$	5,000,040
Prepaid Expenses	\$	474,636
Other Current Assets	\$	3,000

Total Current Assets \$ 12,968,512

Land	\$	11,823,824
Property, Plant and Equipment	\$	38,829,804
Construction in Progress	\$	10,788,823
Accumulated Depreciation	\$	(15,785,538)
Long-term Investment	\$	6,036,190
Loans Receivable	\$	6,929,211

**TOTAL ASSETS** \$ **71,590,826**

### LIABILITIES & NET ASSETS

Current Liabilities	\$	-
Accounts Payable	\$	96,926
Short-term Loans	\$	1,400,842
Deferred Revenue	\$	640,575
Security Deposits	\$	238,302
Other Current Liabilities	\$	42,317

Total Current Liabilities \$ 2,418,962

Long-Term Debt \$ 20,631,781

Total Liabilities \$ 23,050,743

### Net Assets

Net Assets	\$	46,665,796
Net Income / (Loss)	\$	1,874,287

Total Net Assets \$ 48,540,083

**TOTAL LIABILITIES & NET ASSETS** \$ **71,590,826**

Note: Unaudited



## STATEMENT OF ACTIVITIES FOR THE YEAR ENDING DECEMBER 31, 2024

### SUPPORT AND REVENUE

Grants - Federal	\$	-
Grants - State	\$	36,855
Grants - Private	\$	-
Total Grants	\$	36,855

### CONTRIBUTIONS:

Unrestricted Contributions	\$	-
Membership Contributions	\$	36,850
Total Contributions	\$	36,850

### OPERATING REVENUE:

Interest Income	\$	189,995
Investment Income	\$	170,575
Unrealized Gain/(Loss) on Investments	\$	236,774
Realized Gain/(Loss) on Investments	\$	174,869
Loan Service Fees	\$	1,119
Application Fees	\$	150
Reservations	\$	-
Total Operating Income	\$	773,482

### GAS WELL REVENUE:

Royalties	\$	13,076
Sign on Bonuses	\$	13,964
Total Gas Well Revenue	\$	27,040

### RLF INTEREST REVENUE:

Interest from Banks	\$	302,665
Interest from Loans	\$	91,780
Late Fee Income: Loans	\$	308
Investment Gains (Losses)	\$	17,973
Investment Income	\$	7,807
Total RLF Interest Revenue	\$	420,533

### RENTAL REVENUE:

Lease Revenue	\$	4,816,187
Tenant Assessments	\$	109,282
Total Rental Revenue	\$	4,925,469

### PROPERTY OPERATIONS REVENUE:

Gain (Loss)/Disposition on Sale of Assets	\$	(152,104)
Park Admin Fees	\$	17,750
Mining Lease Revenue	\$	2,834
Total Property Oper. Revenue	\$	(131,520)

**TOTAL REVENUE** \$ **6,088,709**

### FUNCTIONAL EXPENSES

Management & General	\$	1,139,470
Program & RLF Expense	\$	743,587
RLF Expenses	\$	9,104
Fundraising	\$	-
Real Estate & Rental Expenses	\$	2,322,261

**TOTAL FUNCTIONAL EXPENSES** \$ **4,214,422**

**Increase (Decrease) in Net Assets** \$ **1,874,287**

### NET ASSETS

NET ASSETS - BEGINNING	\$	46,273,112
CHANGE IN NET ASSETS	\$	1,874,287

**NET ASSETS - ENDING** \$ **48,147,399**

# 2025 BOARD OF DIRECTORS

## OFFICERS

### CHAIR



DAN GEARING  
PRES., SPECIALTY  
CONDUIT & MFG., LLC.

### 1ST VICE CHAIR



TODD CASTEEL  
CEO, COMPASS  
TECHNOLOGIES

### 2ND VICE CHAIR



DEBORAH J. FOX  
RETIRED, BAE SYSTEMS, INC.

### TREASURER



CLIFFORD (CJ)  
CALLAHAN  
MARKET PRESIDENT  
UNITED BANK

### SECRETARY



DEVAN WHITE  
VP-FINANCIAL ADVISOR  
WEALTH ENHANCEMENT GROUP

## DIRECTORS



ED BALLING  
OWNER, FAIRCHANCE  
CONSTRUCTION CO.



ANDREW ERJAVEK  
VP, RELATIONSHIP MANAGER,  
FIRST NATIONAL BANK



SHANE GANNON, ESQ.  
PARTNER  
WATSON MUNDORFF, LLP



MICHAEL GEORGE  
PARTNER, MOUNTAINCREEK  
PROPERTIES MANAGEMENT



MAX HOUSE  
PRES., HOUSE FINANCIAL  
SERVICES



WILLIAM JACKSON  
OWNER, JACKSON FARMS



CORBIN KEARNS  
GLOBAL ENGINEERING DIRECTOR  
JOHNSON MATTHEY



LAWRENCE KIEFER  
TREAS., SCOTTDALE BANK &  
TRUST/MID-PENN BANK



JUDY LYNN-CRAIG  
PRES., DAIRY QUEEN OF  
SW PA, INC.



ROBERT MCLUCKEY  
OWNER, MCLUCKEY  
DEVELOPMENT



RUSTY SMALLEY  
PRES., GEORGE R. SMALLEY  
CO., INC.



STEVE SMOLENSKI  
OWNER, JOLTBIKE



JAMES STARK  
RETIRED, FAY. CO. COMMUNITY  
ACTION AGENCY



TED STILGENBAUER  
PRES., HEARTLAND  
FABRICATION, LLC



BRET SWANEY  
OWNER, PINE HOLLOW  
MECHANICAL INC.

## DIRECTORS EMERITI



WILLIAM BLANEY  
PAST CHAIR



MARK FIKE  
PAST CHAIR  
ACCOUNT EXECUTIVE  
SPROWLS INSURANCE



JAMES FOUTZ  
PAST TREASURER  
ZODIAC MANAGEMENT  
SERVICES, LLC.



STEPHEN NEUBAUER  
PAST CHAIR  
PRES./GENERAL MGR.  
NEUBAUER'S FLOWERS, INC.



GREG PARSONS  
PAST SECRETARY  
OWNER, PARSONS  
INSURANCE SERVICES, LLC.

# MEMBERS AND PARTNERS

Argon ST Inc./The Boeing Company  
Bear IC, LLC  
Berkeley Medical  
Blaney, William  
Bridgeway Capital, Inc.  
Brier Hill Steel  
Brownsville Area Revitalization Corp.  
Carlisle Construction Materials dba Hunter Panels  
Catalyst Connections  
Chestnut Ridge Counseling Services  
City of Connellsville  
City of Uniontown  
Coldwell Banker Laurel Ridge Realty  
Community Foundation of Fayette County  
Compass Technologies Consulting LLC  
Connellsville Redevelopment Authority  
Dairy Queen of SW PA, Inc.  
DeFrank Development  
Demco Excavating, Inc.  
Fairchance Construction Company  
Fayette Chamber of Commerce  
Fayette County Association of Township Supervisors  
Fayette Co. Behavioral Health  
Fayette Co. Career & Technical Institute  
Fayette Co. Community Action Agency, Inc.  
Fayette Co. Housing Authority  
Fayette Furnace Co., Inc.  
Fike, Mark  
First Energy/West Penn Power  
First Federal Savings & Loan of Greene  
First National Bank (FNB)  
Ford Office Technologies  
Fox, Deborah  
Gallatin Fuels  
GO Laurel Highlands  
Greater Connellsville Chamber of Commerce  
Holt & Bugbee Hardwoods  
House Financial Services  
Jackson Dairy Farm  
Janney Montgomery Scott, LLC  
John A. Fiesta Agency Inc.  
Johnson Matthey  
JoltBike LLC  
K2 Engineering, Inc.  
KIZ Resources, LLC  
Laurel Business Institute  
Laurel Caverns  
Laurel Highlands School District  
Laurel Machine Company  
Masonstown Borough  
Masonstown Trophy & Embroidery Co.  
McClure & Wolf, LLP  
McMillen Engineering

Meloni's Restaurant  
MLK Foods Inc. dba Shoppers Value Foods  
Mon Valley Regional Chamber of Commerce  
Montgomery Medical Inc.  
Mountaincreek Properties  
NAPA/Fayette Parts Service  
Nemacolin Woodlands  
Neubauer's Flowers, Inc.  
NiSource  
North Fayette County Municipal Authority  
O.C. Cluss Lumber Co., Inc.  
Observer Reporter/Herald-Standard  
Parsons, Greg  
Penn State, The Fayette Campus  
Pine Hollow Mechanical, Inc.  
PNC Bank  
Pureon Inc.  
Redevelopment Authority of the County of Fayette  
Redstone Excavating  
Scottdale Bank & Trust Div. of Mid Penn Bank  
Shallenberger Construction  
Sisters of the Order of St Basil the Great  
Sleighter Engineering  
Somerset County Chamber of Commerce  
Somerset Trust Company  
Southwest PA Railroad  
Southwestern PA Commission  
Speciality Conduit & Mfg. LLC  
Sprowls Insurance Group  
Stark, James  
State Theatre Center for the Arts/GUHC  
Stefano, Pat, Senator  
Stephen R. Haky Funeral Home  
Township of Brownsville  
Township of Bullskin  
Township of Georges  
Township of German  
Township of Luzerne  
Township of Redstone  
Township of Saltlick  
Township of Upper Tyrone  
Township of Wharton  
United Bank  
Vermin Control Co.  
Vitalink  
Washington County Chamber of Commerce  
Wealth Enhancement Group  
Westmoreland County Chamber of Commerce  
Westmoreland-Fayette Workforce Investment Board  
West Penn Warehousing  
Western PA Conservancy/Fallingwater  
WSW Holdings, Inc.  
YMCA - Uniontown  
Zodiac Management Services, LLC

## REGIONAL ALLIANCE PARTNERS:

- Allegheny Conference on Community Development
- Business PA
- PA Dept. of Community and Economic Development
- Pittsburgh Regional Alliance
- Pittsburgh Business Exchange



FAYPENN.ORG



FAY-PENN ECONOMIC DEVELOPMENT COUNCIL

UNIVERSITY BUSINESS PARK . 1040 EBERLY WAY . SUITE 200 . LEMONT FURNACE, PA 15456

PHONE 724.437.7913 FAX 724.437.7315 INFO@FAYPENN.ORG FAYPENN.ORG

Fay-Penn is an Equal Opportunity Lender, Provider and Employer. Complaints of discrimination should be sent to USDA, Director, Office of Civil Rights, Washington, D.C. 20250-9420